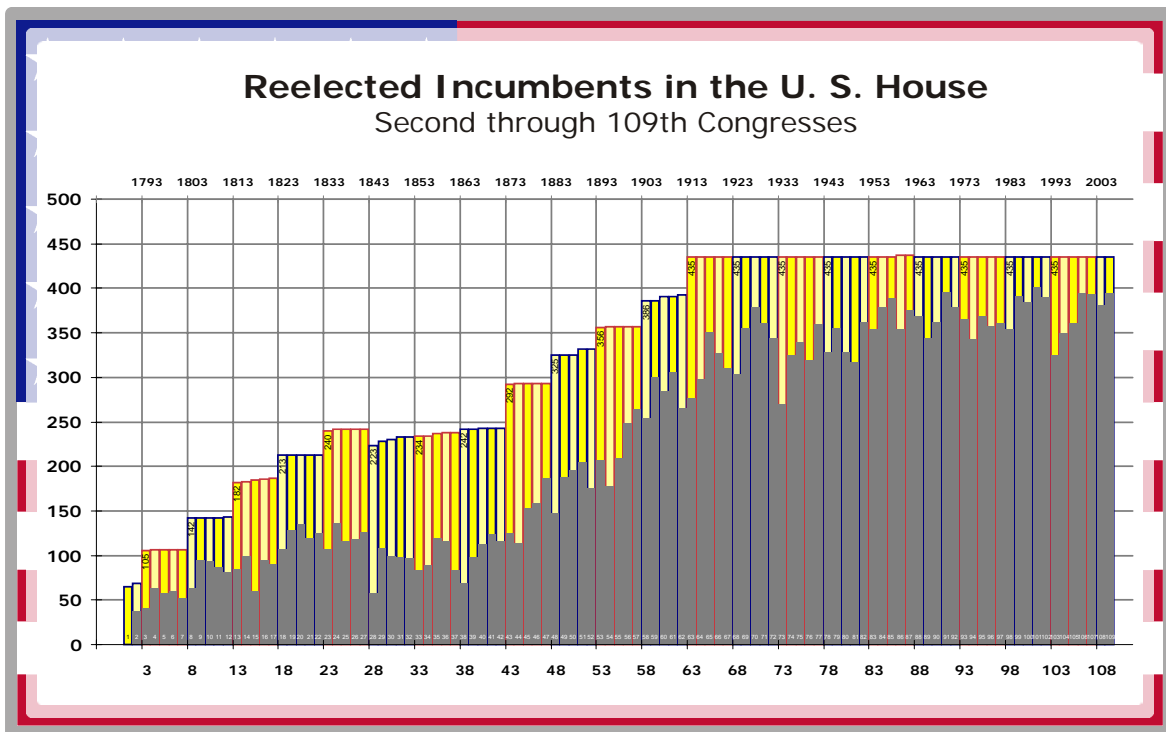


Historical Prevalence of Reelected Representatives in the U. S. House

By Congress and by State

Second through 109th Congress



Quantitative Historical Analysis #7

<http://www.thirty-thousand.org/pages/QHA-07.htm>

thirty-thousand.org

<http://www.thirty-thousand.org>

Contact:

Quidam@thirty-thousand.org

Published
March 27, 2005

Revised
August 20, 2006
February 18, 2007

Table of Contents

<u>Section 1</u>	Overview 1 <i>Explanation of analysis and data sources</i>
<u>Section 2</u>	Data Summary and Analytical Results 4 <i>Graphical illustrations and Comments</i>
<u>Section 3</u>	Reelected Incumbent Prevalence Rates (Summary)..... 7 <i>U. S. House RIP by Congress and by state</i>

Appendices

<u>Appendix I</u>	Reelection Data..... 10
<u>Appendix II</u>	Analysis Methodology 11
<u>Appendix III</u>	Comparison of the CRS and TTO Analyses..... 13
<u>Appendix IV</u>	Reelected Incumbent Prevalence (tables)..... 14

© 2007 **thirty-thousand.org**

Personal use of this material is permitted as long as it is attributed to **thirty-thousand.org**. However, permission to reprint/republish this material for advertising or promotional purposes or for creating new collective works for resale or redistribution to servers or lists, or to reuse any copyrighted component of this work in other works must be obtained from **thirty-thousand.org**.

Thirty-thousand.org believes the data contained herein to be correct; however, we would greatly appreciate any errors being brought to our attention.

1. OVERVIEW

1.1. Purpose

This report describes the extent to which *reelected incumbents* have comprised the U. S. House of Representatives from 1791 to 2005. Specifically, for each Congress (from the second to the 109th Congresses), the percentage of Representatives who were reelected (from the preceding Congress) is provided by state and in total.

The table below illustrates the composition of the reelection data available for analysis.

106 th Congress			107 th Congress		
Authorized Size: 435			Authorized Size: 435		
Total Representatives: 437	Sought Reelection: 403	Won Reelection: 394	Total Representatives: 442	Sought Reelection: 399	Won Reelection: 382
		Lost Reelection: 9			Lost Reelection: 17
	Waived Reelection: 32			Waived Reelection: 40	
	Ineligible: 2			Ineligible: 3	

In the 106th Congress, for example, the *authorized size* was 435 seats though ultimately a *total* of 437 were elected to that Congress due to turnover. Of the 437, 403 *sought reelection* and 32 did not seek (i.e. *waived*) reelection. The total *ineligible*, 2, refers to those who could not have chosen to seek reelection (due to death or some other preemptive reason). Of the 403 who sought reelection (to the 107th Congress), 394 *won reelection* and 32 *lost reelection*.

Using this data, this report focuses only on the percentage of each Congress comprised of reelected incumbents. Specifically, this report answers the question: *for a given Congress, what percentage was reelected (from the previous Congress)?* This value is called the *Reelected Incumbent Prevalence* (or “RIP”) in order to differentiate it from other reelection measures.¹

Note that RIP is the total number of reelected Representatives as a percentage of the size of the House *to which* they were elected. Consequently, in those instances where, because of reapportionment, the total size of the House (or any state delegation) is increased or decreased the resulting effect is immediately reflected.²

¹ A separate TTO report, “Reelection Rates of Incumbents in the U. S. House” (<http://www.thirty-thousand.org/pages/QHA-08.htm>), provides the historical *reelection rates* which is defined here as “Won Reelection” ÷ “Sought Reelection”. Using the data provided above, for example, the reelection rate for the 106th Congress is equal to 97.8% (394 ÷ 403).

² Though the decennial reapportionment has not changed the aggregate size of the House since 1913, it has frequently changed the size of the constituent state delegations.

RIP indicates the extent to which reelected incumbents (as opposed to newly elected “freshmen”) initially comprise each Congress.³ Consequently, RIP may be useful for evaluating any given legislative session (e.g., the behavior of legislators therein) as a function of the prevalence of reelected incumbents. A consideration of these implications is well beyond the limited scope of this analysis. Instead, the purpose of this analysis is to simply establish a reliable dataset that can be used as a basis for future analyses of incumbency entrenchment in the U. S. House.

The most comprehensive analysis done previously on historical reelection data is the “Reelection Rates of Incumbents: 1790 – 1994” which is cited herein as the “CRS report.”⁴

The results of the CRS report and this analysis are compared in Appendix III. These two analyses are further compared in “Reelection Rates of Incumbents in the U. S. House.”⁵ and in the “Summary and Comparison of the Data Used by the TTO and CRS Analyses”.⁶

1.2. Data Source

This analysis requires the following two data sets for *each Congress*:

The numerator, *Won Reelection* (the number of reelected incumbents), is provided by the “Biographical Compilation of U. S. House Representatives” or *Compilation*.⁷

The denominator, *Authorized Size* (the number of memberships in the House) is provided by “The Size of the U. S. House of Representatives and its Constituent State Delegations by Year and by Congress from 1789 to 2006”.⁸

As explained in the above-referenced reports, the historical values for both the numerator (reelected incumbents) and denominator (number of seats) can be determined with virtually certainty.

³ In many cases, the portion of a Congress comprised of reelected incumbents will decline slightly over time because of turnover (e.g., due to death) and the subsequent special election of replacement Representatives.

⁴ The *Reelection Rates of Incumbents: 1790 – 1994*, Congressional Research Service (CRS), March 1995 provides re-election rates for both the House and Senate. A copy of this report can be found at <http://www.thirty-thousand.org/pages/QHA-07.htm>.

⁵ This TTO report on reelection rates can be obtained from <http://www.thirty-thousand.org/pages/QHA-08.htm>.

⁶ This report can be found at <http://www.thirty-thousand.org/pages/QHA-07.htm>.

⁷ The *Compilation* provides biographical data on all Representatives elected to the House since March of 1789. For additional information see Appendix I of this report.

⁸ *The Size of the U. S. House of Representatives and its Constituent State Delegations by Year and by Congress from 1789 to 2006* (TTO) provides the number of House Representatives authorized – in total and for each state – annually from 1789 to 2006. The report is available at: <http://www.thirty-thousand.org/pages/QHA-02.htm>.

1.3. Methodology

The analysis methodology can best be explained by example: 394 of the Representatives in the 107th Congress were reelected from the previous Congress. The authorized size of the 107th Congress is 435 seats; therefore, its RIP is 90.6% ($394 \div 435$).

Section 3 of this report provides the percentage of reelected incumbents in the U. S. House or *Reelected Incumbent Prevalence* (“RIP”).

1.4. Conclusions

As shown herein, RIP has been hovering around 80% to 90% over the last half century whereas during the 19th century it generally ranged around 40% to 60%.

The increasing RIP results from a combination of two factors. First, and as a prerequisite, there has to be an increase in the number of Representatives who choose (and are able) to *seek* reelection. Beyond that, the second factor is the increasing likelihood that incumbent candidates will *win* reelection (i.e., prevail over any challengers). This second factor is generally known as the *incumbency advantage*. These two factors are analyzed in the previously cited report on reelection rates.⁴

RIP is affected by additional factors beyond the direct influence of the candidate or the electorate. The most significant external effect is produced by reapportionment which, every ten years, creates or abolishes a number of House seats in various states. In some cases the reapportionment does not change the number of seats and, therefore, has no impact. In most cases the number of seats (for any given state or the aggregate total) is either increased or decreased. Increasing the number of seats results in a higher number of freshman Representatives hence a lower RIP. Similarly, the admission of new states also reduces RIP, though nearly insignificantly, due to resulting addition of a small number of new seats.

In contrast, decreasing the number of House seats creates a musical-chairs effect which tends to *increase* RIP. This is because the competitive pressure engendered by reducing the number of seats (relative to the extant pool of incumbents) is likely to foil the efforts of prospective non-incumbent challengers.

Finally, because the historical values for both the numerator (reelected incumbents) and denominator (number of seats) are known with virtually certainty, the RIP rates are extremely reliable. In contrast, the historical *reelection rates* can not be reliably determined due to data inadequacies.¹

2. DATA SUMMARY AND ANALYTICAL RESULTS

2.1. Number of Reelected Representatives in the House

The chart below illustrates the total size of the U. S. House (by Congress). The shaded area indicates the total number of Representatives who had also served in the previous Congress (i.e., those that were *reelected from* the previous Congress).

Reelected Incumbents in the U. S. House
 Second through 109th Congresses

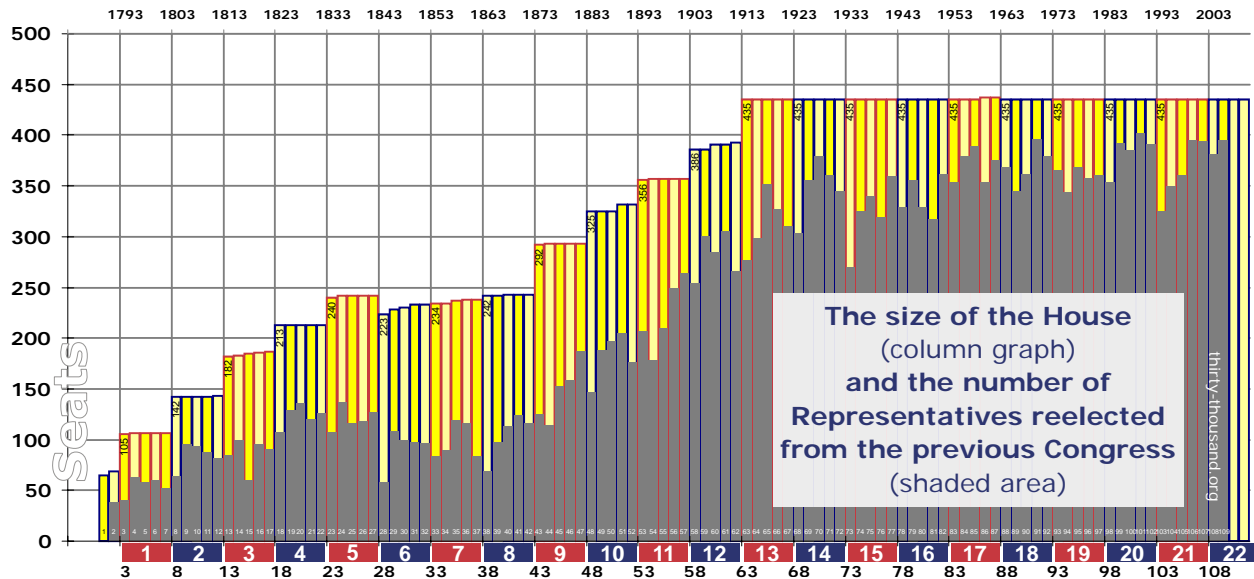


Chart 2-A — Number of Incumbents Reelected from the Previous Congress

The horizontal (x-axis) is sectioned into the 22 apportionment regimes. Note the relative drop in reelection rates that typically occurs the first Congress of each new apportionment regime. For example, the number of reelected incumbents in the 103rd Congress (at the beginning of the 21st apportionment in 1993) drops to 74.7% from nearly 90% in the preceding Congress.⁹ This is due to member turnover resulting from the creation of new House seats in some states and the abolishment of existing seats in others (due to the decennial reapportionment). In the case of the 103rd Congress, for example, the 21st apportionment transferred 19 House memberships from one set of states to another.¹⁰

⁹ From Section 3 of this report.

¹⁰ From section 2.5 (Chart E) of *The Size of the U. S. House of Representatives and its Constituent State Delegations by Year and by Congress from 1789 to 2006*; see footnote 8 above.

2.2. Percentage of Incumbent Representatives Reelected

The chart below is similar to the preceding chart except that it also includes a line graph illustrating the reelected incumbent prevalence (RIP %) in the House (plotted against the right-hand Y-axis).

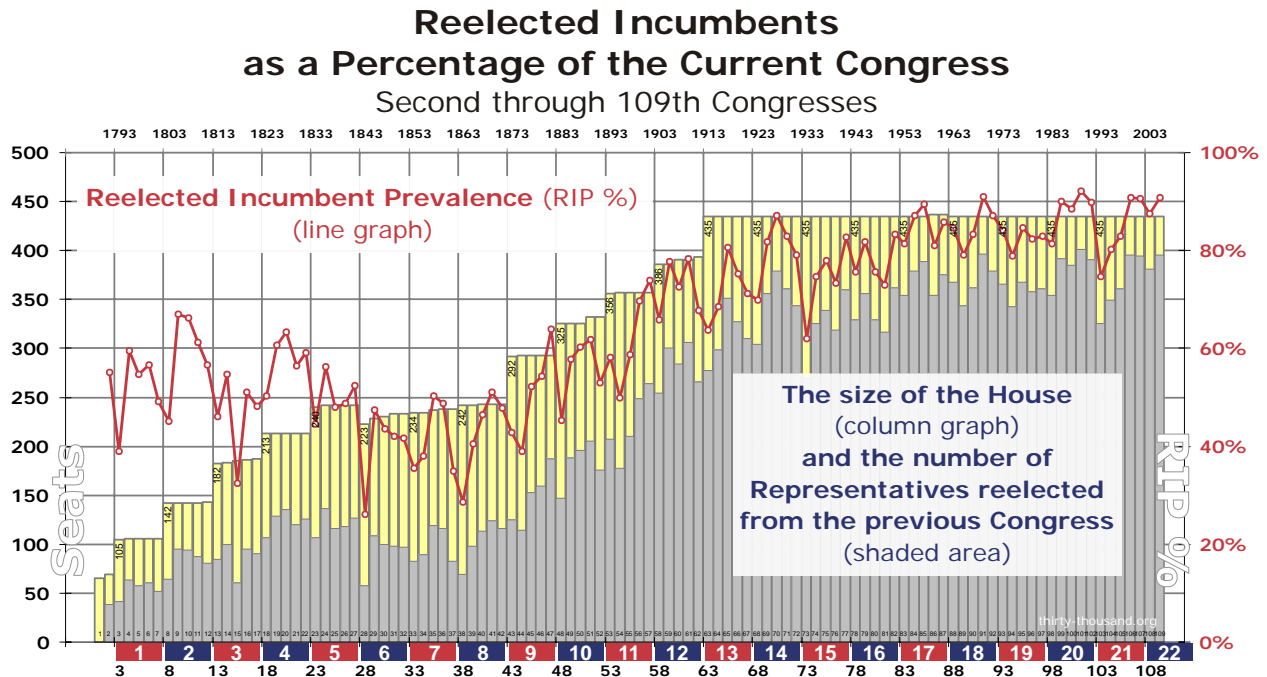


Chart 2-B — Reelected Incumbent Prevalence (RIP %)

As can be seen, RIP has been hovering around 80 to 90% in recent history. Since the 82nd Congress (which began on Jan 4, 1951), it has *averaged* 85.30%. The entire data set can be seen in Section 3 and in Appendix IV.

2.3. Trend Analysis

The reelected incumbent data is subject to relatively wide swings for various reasons ranging from institutional (e.g., decennial reapportionment) to more capricious factors such as incumbent mortality, career fatigue, transient political shifts and other unpredictable events which comprise the human experience. That notwithstanding, it is still possible to clearly discern an underlying trend. The chart below shows the plot of a curvilinear regression analysis of the RIP reelection rate data.¹¹

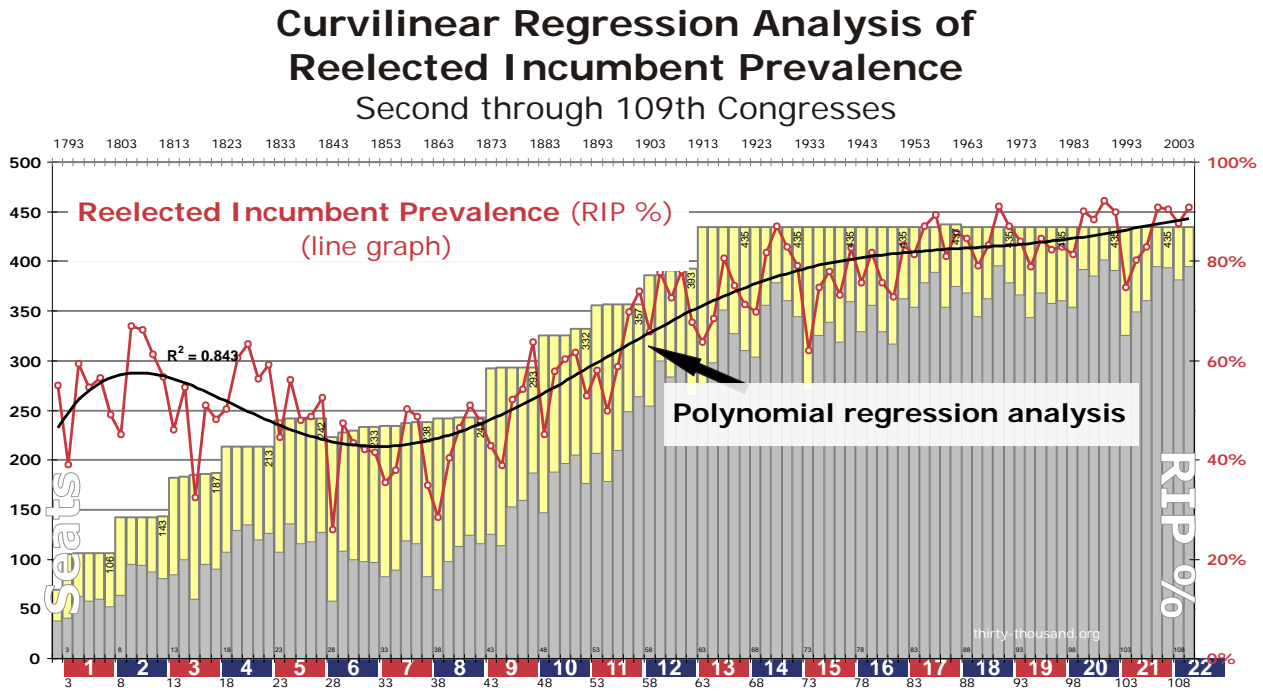


Chart 2-C — Regression Analysis of RIP%

Though this regression analysis does not provide a reliable basis for forecasting reelection rates, the underlying data appears to be trending nearly asymptotically towards the upper boundary of 100%. Given the way the House is currently constituted, and barring major political turmoil or institutional changes, it seems likely that RIP will continue bobbing around the 90% level for the foreseeable future.

¹¹ This line is a sixth-degree polynomial equation which was used due to its relatively high coefficient of determination (R^2 value) of .843.

3. REELECTED INCUMBENT PREVALENCE RATES (SUMMARY)

The table below provides the percentage of each Congress comprised of Representatives reelected from the preceding Congress.

Reelected Incumbent Prevalence in the U. S. House 2 nd through 109 th Congresses							
Apportionment Regimes (1 - 22)	C	Congress (year)				2 (1791)	
		District Population				55.1%	
	1	Congress (year)	3 (1793)	4 (1795)	5 (1797)	6 (1799)	7 (1801)
		District Population	39.0%	59.4%	54.7%	56.6%	49.1%
	2	Congress (year)	8 (1803)	9 (1805)	10 (1807)	11 (1809)	12 (1811)
		District Population	45.1%	66.9%	66.2%	61.3%	56.6%
	3	Congress (year)	13 (1813)	14 (1815)	15 (1817)	16 (1819)	17 (1821)
		District Population	46.2%	54.6%	32.4%	51.1%	48.1%
	4	Congress (year)	18 (1823)	19 (1825)	20 (1827)	21 (1829)	22 (1831)
		District Population	50.2%	60.6%	63.4%	56.3%	59.2%
	5	Congress (year)	23 (1833)	24 (1835)	25 (1837)	26 (1839)	27 (1841)
		District Population	44.6%	56.2%	47.9%	48.8%	52.5%
	6	Congress (year)	28 (1843)	29 (1845)	30 (1847)	31 (1849)	32 (1851)
		District Population	26.0%	47.4%	43.5%	42.1%	41.6%
	7	Congress (year)	33 (1853)	34 (1855)	35 (1857)	36 (1859)	37 (1861)
		District Population	35.5%	38.0%	50.2%	48.7%	34.9%
	8	Congress (year)	38 (1863)	39 (1865)	40 (1867)	41 (1869)	42 (1871)
		District Population	28.5%	40.5%	46.5%	51.0%	47.7%
	9	Congress (year)	43 (1873)	44 (1875)	45 (1877)	46 (1879)	47 (1881)
		District Population	42.8%	38.9%	52.2%	54.3%	63.8%
	10	Congress (year)	48 (1883)	49 (1885)	50 (1887)	51 (1889)	52 (1891)
		District Population	45.2%	57.8%	60.3%	61.7%	53.0%
11	Congress (year)	53 (1893)	54 (1895)	55 (1897)	56 (1899)	57 (1901)	
	District Population	58.1%	49.9%	58.8%	69.7%	73.9%	
12	Congress (year)	58 (1903)	59 (1905)	60 (1907)	61 (1909)	62 (1911)	
	District Population	65.8%	77.7%	72.6%	78.3%	67.7%	
13	Congress (year)	63 (1913)	64 (1915)	65 (1917)	66 (1919)	67 (1921)	
	District Population	63.7%	68.5%	80.7%	75.2%	71.3%	
14	Congress (year)	68 (1923)	69 (1925)	70 (1927)	71 (1929)	72 (1931)	
	District Population	69.9%	81.8%	87.1%	83.0%	79.1%	
15	Congress (year)	73 (1933)	74 (1935)	75 (1937)	76 (1939)	77 (1941)	
	District Population	62.1%	74.7%	77.9%	73.3%	82.8%	
16	Congress (year)	78 (1943)	79 (1945)	80 (1947)	81 (1949)	82 (1951)	
	District Population	75.6%	81.8%	75.6%	72.9%	83.2%	
17	Congress (year)	83 (1953)	84 (1955)	85 (1957)	86 (1959)	87 (1961)	
	District Population	81.4%	87.1%	89.4%	81.0%	85.8%	
18	Congress (year)	88 (1963)	89 (1965)	90 (1967)	91 (1969)	92 (1971)	
	District Population	84.6%	79.1%	83.2%	91.0%	87.1%	
19	Congress (year)	93 (1973)	94 (1975)	95 (1977)	96 (1979)	97 (1981)	
	District Population	84.1%	78.9%	84.6%	82.3%	83.0%	
20	Congress (year)	98 (1983)	99 (1985)	100 (1987)	101 (1989)	102 (1991)	
	District Population	81.4%	90.1%	88.5%	92.2%	89.9%	
21	Congress (year)	103 (1993)	104 (1995)	105 (1997)	106 (1999)	107 (2001)	
	District Population	74.7%	80.2%	83.0%	90.8%	90.6%	
22	Congress (year)	108 (2003)	109 (2005)	110 (2007)	111 (2009)	112 (2011)	
	District Population	87.6%	90.8%				

In the table above, the five Congresses that comprise each apportionment regime (between the first and the 22nd) are listed by row (e.g., the first regime lasted from the third Congress to the seventh). For historical context, the initial year of each Congress is also provided.

For example: the 109th Congress — which began in 2005 — occurs during the 22nd apportionment regime. Of that Congress, 90.8% of the Representatives were reelected from the preceding Congress. Additional detail is provided in Appendix IV, which also provides the RIP reelection rates by state for all Congresses beginning with the second.

Appendices

Appendix I — Reelection Data

A) Biographical Compilation of U. S. House Representatives

All the data for this analysis is provided by TTO’s congressional database, the content of which is described by the *Biographical Compilation of U. S. House Representatives*,¹² or “Compilation.” The *Compilation* is comprised of all persons who were elected to the U. S. House of Representatives between March of 1789 (the First Congress) and December 31, 2005 (midway through the 109th Congress). The compilation was derived from the *Biographical Directory of the United States Congress* (data as of March 2005).

In the current data set there are 10,508 Representatives who account for 36,663 *instances* of an election to the House. This data can be aggregated to produce various statistical analyses such as the one summarized by this report.

For the purposes of this analyses, “Nominal Tenure” is defined as the number of *consecutive* Congressional terms to which a Representative has been elected (as of any given Congress). For example: a Representative elected to three consecutive Congresses has a *Nominal Tenure* of 3. For any given Congress, the number of Representatives reelected is the tally of those who had a Nominal Tenure *greater than one*.

B) Simultaneous Election to Consecutive Terms

For the purposes of determining nominal tenure, the *Compilation* data does not treat the simultaneous election to consecutive Congresses as a reelection. This event occurs in a small number of cases where someone who is elected to fill a vacancy at the end of Congress (such vacancy having been caused, for example, by the death or early resignation of the predecessor) is simultaneously elected to the subsequent term. Because it may be misleading to construe that Representative as having been truly “reelected” — from their first (partial) term to the following full term — the simultaneous elections are treated as a single event. Therefore, in order to be conservative, this analysis *assumes* that any Representative elected after the final November 1 of the preceding Congress — and also elected to the current Congress — were elected *simultaneously* to both congresses and therefore not reelected for the purposes of these tabulations.

¹² Additional information on the *Biographical Compilation of U. S. House Representatives* can be found at: <http://www.thirty-thousand.org/pages/QHA-06.htm>.

Appendix II — Analysis Methodology

A) Overview

The prevalence of reelected incumbents in the House is measured by determining the *reelected incumbents as a percentage of the current legislature “n”* (RI_n/L_n). Examples of how the *RIP* rates are calculated are shown in the table below:

Congress	Size of House	Size of House L_n	Reelected Incumbents	Calculation	RIP %
61	391	391	306	$306 \div 391$	78.3%
62	393	391	266	$266 \div 391$	68.0%
63	435	435	277	$277 \div 435$	63.7%
64	435	435	298	$298 \div 435$	68.5%

“Reelected Incumbents” is the number of incumbents reelected from the preceding Congress.

B) The Confederate States

The Confederate states did not send delegations to the U. S. Congress for various time spans during the War of Secession (between 1860 and 1865) and its aftermath.¹³ In this analysis, the absences resulting from these de facto withdrawals from the Union are calculated at 0%.

However, an argument could be made that the analysis of reelection rates should, as was done in the CRS report, exclude the Confederate states. The table below shows the impact of excluding these states until their second Congress of participation after the war.

Impact of the War of Secession					
Congress	37	38	39	40	41
Reelected Incumbents (numerator):					
Nominal	83	69	98	113	124
Excluding Confederate states	79	68	98	113	124
House Size (denominator):					
Nominal	238	242	242	243	243
Excluding Confederate states	172	184	184	193	226
RIP %:					
Nominal	34.9%	28.5%	40.5%	46.5%	51.0%
Excluding confederate states	45.9%	37.0%	53.3%	58.5%	54.9%

¹³ The approximate periods of secession are highlighted in the Appendix IV data tables for Alabama, Arkansas, Georgia, Louisiana, Mississippi, North Carolina, South Carolina, Tennessee, Texas and Virginia.

Disregarding the Confederate states increases RIP by approximately a third during Congresses 37 through 40. Though this impact is material, it doesn't significantly change the overall picture as can be shown in the chart below. Note the increase in RIP values (only for Congresses 37 – 41) along with a slight shift upwards in a portion of the regression analysis.

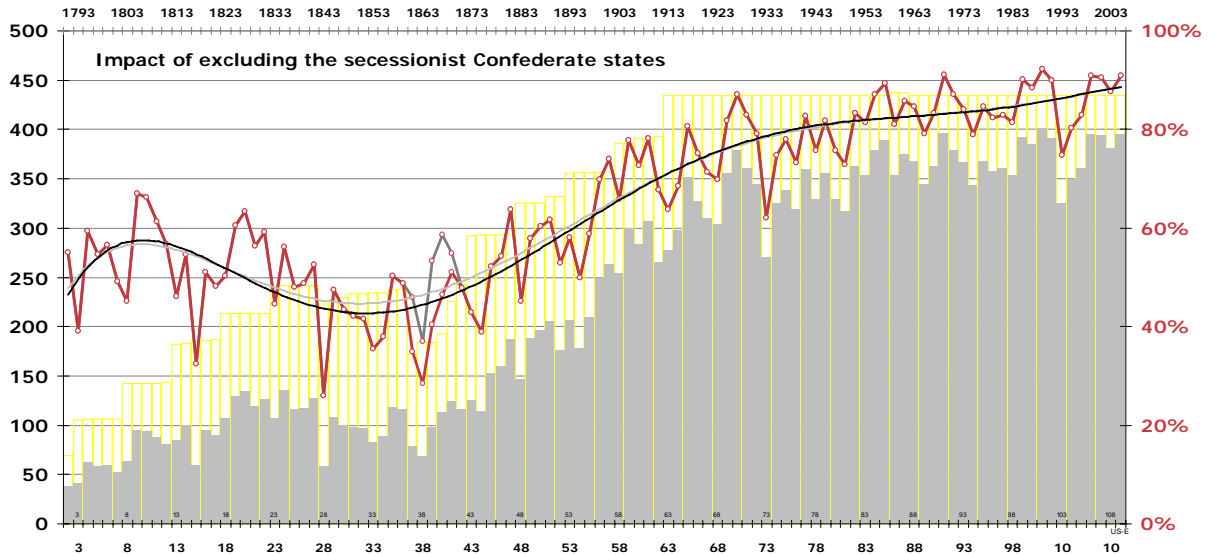


Chart II-A — Impact of excluding the Confederate states

Appendix III — Comparison of the CRS and TTO Analyses

Because the CRS¹⁴ and TTO analyses relied on two entirely different data sources the results are not identical; however, as can be seen in the chart below, the results are nearly equivalent.¹⁵ Consequently, the two analyses corroborate one another quite well. The differences between these two analyses are due to small explainable discrepancies between the numerators¹⁶ (i.e., the number of reelected Representatives) and/or the denominators (i.e., the size of the prior House).¹⁷

Reelected Representatives in the U. S. House – RIP

Comparison of CRS and TTO Analyses

Second through 109th Congress

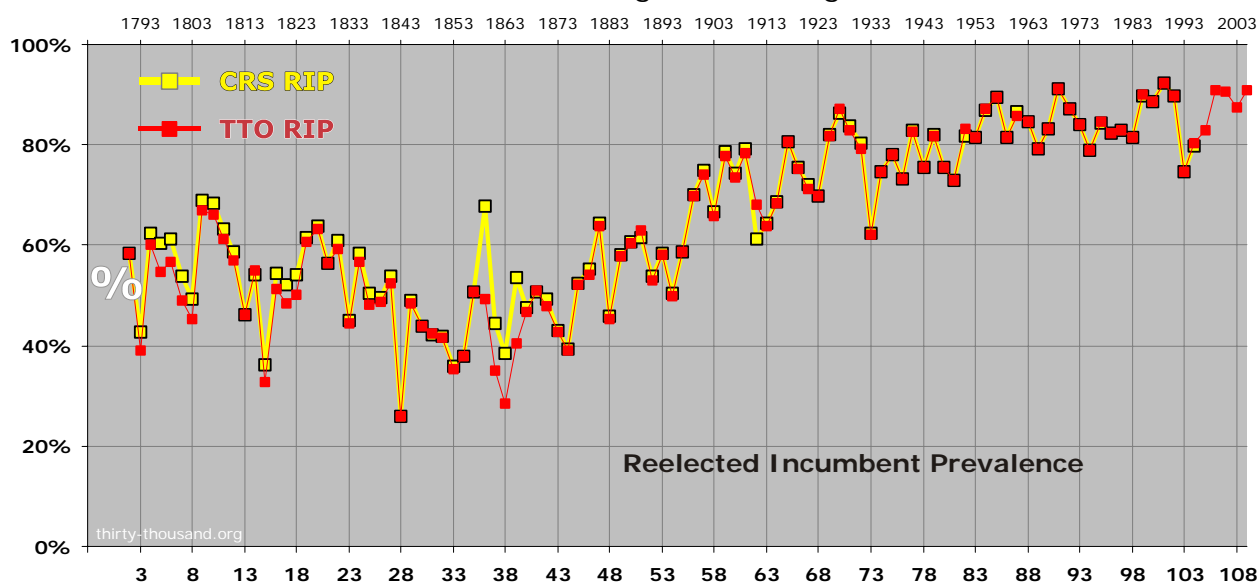


Chart III-A — Comparison of TTO and CRS data with respect to the percentage of incumbents reelected (RIP %)

NOTE: for additional information on the CRS data, see *Summary and Comparison of the Data Used by the TTO and CRS Analyses*.¹⁸

¹⁴ *Reelection Rates of Incumbents: 1790 – 1994*, by David C. Huckabee, was first published by the Congressional Research Service on March 8, 1995. The CRS report only provides reelection rates at the aggregate (U. S.) level through 1994. A copy of the CRS report is available at <http://www.thirty-thousand.org/pages/QHA-07.htm>.

¹⁵ The average of the variances between the two sets of reelection rates is 1.11 points (second through 104th Congress).

¹⁶ Many of the differences in the numerators can be attributed to how the TTO analysis treats the simultaneous election to consecutive terms (as explained in Appendix I). In the case of the third Congress, for example, the TTO analysis counts 41 incumbents as having been reelected vs. a total of 44 per the CRS study. This difference is entirely attributable to the fact that three of the Representatives elected to the *third* Congress had been elected to the *second* Congress after November 1, 1792; these were not counted as reelected for the TTO analysis (but were included in the CRS total of 44).

¹⁷ As can be seen in the chart, the only significant difference between the results of the two analyses occurs from the 36th to the 39th Congresses when the CRS analysis reduces the size of the House (the denominator) to reflect the non-participation of the secessionist Confederate states. In contrast, the TTO analysis does not do this, opting instead for a more consistent and conservative treatment of the data.

¹⁸ This report can be found at <http://www.thirty-thousand.org/pages/QHA-07.htm>.

Appendix IV — Reelected Incumbency Prevalence Rates

The following tables provide the Reelected Incumbent Prevalence (or “RIP”). The RIP rates are calculated *by Congress* for each state as well as for the *aggregate* (total U. S.). The data are for admitted states only; D.C. and territories are not included.

The data sources and methodology used to calculate these values are explained in the body of this report.

Historical Prevalence of Reelected Representatives in the U. S. House

Appendix IV — Reelected Incumbents in the U. S. House (RIP %)

Congress		1		2		3		4		5		6		7		8		9		10		11		12													
Start & End Dates		1789	1791	1791	1793	1793	1795	1797	1797	1799	1801	1801	1803	1805	1805	1807	1807	1809	1809	1811	1811	1813	1813	1815	1815												
Congressional Year		Mar-04	Mar-03	Mar-04	Mar-03	Mar-04	Mar-03	Mar-04	Mar-03	Mar-04	Mar-03	Mar-04	Mar-03	Mar-04	Mar-03	Mar-04	Mar-03	Mar-04	Mar-03	Mar-04	Mar-03	Mar-04	Mar-03	Mar-04	Mar-03												
Apportionment		CONSTITUTION												1												2											
Total U. S.																																					
Reelected Incumbents																																					
Size of House (adjusted)																																					
Size of House																																					
RIP %																																					
State:	Admission																																				
Alabama	Dec. 14, 1819																																				
Alaska	Jan. 3, 1959																																				
Arizona	Feb. 14, 1912																																				
Arkansas	June 15, 1836																																				
California	Sept. 9, 1850																																				
Colorado	Aug. 1, 1876																																				
Connecticut	Jan. 9, 1788		60.0%	57.1%	57.1%	57.1%	57.1%	57.1%	85.7%	85.7%	85.7%	100.0%	85.7%																								
Delaware	Dec. 7, 1787		100.0%	0.0%	100.0%	0.0%	100.0%	100.0%	0.0%	0.0%	100.0%	100.0%	0.0%	0.0%	100.0%	100.0%	0.0%	0.0%	100.0%	100.0%	0.0%	0.0%															
Florida	Mar. 3, 1845																																				
Georgia	Jan. 2, 1788		33.3%	50.0%	50.0%	100.0%	0.0%	50.0%	0.0%	75.0%	25.0%	100.0%	75.0%																								
Hawaii	Aug. 21, 1959																																				
Idaho	July 3, 1890																																				
Illinois	Dec. 3, 1818																																				
Indiana	Dec. 11, 1816																																				
Iowa	Dec. 28, 1846																																				
Kansas	Jan. 29, 1861																																				
Kentucky	June 1, 1792		0.0%	0.0%	100.0%	0.0%	100.0%	100.0%	16.7%	100.0%	33.3%	66.7%	50.0%																								
Louisiana	Apr. 30, 1812																																				
Maine	Mar. 15, 1820																																				
Maryland	Apr. 28, 1788		16.7%	25.0%	75.0%	50.0%	62.5%	37.5%	77.8%	55.6%	55.6%	77.8%	66.7%																								
Massachusetts	Feb. 6, 1788		75.0%	42.9%	57.1%	57.1%	71.4%	42.9%	47.1%	52.9%	76.5%	64.7%	64.7%																								
Michigan	Jan. 26, 1837																																				
Minnesota	May 11, 1858																																				
Mississippi	Dec. 10, 1817																																				
Missouri	Aug. 10, 1821																																				
Montana	Nov. 8, 1889																																				
Nebraska	Mar. 1, 1867																																				
Nevada	Oct. 31, 1864																																				
New Hampshire	June 21, 1788		66.7%	50.0%	75.0%	50.0%	75.0%	25.0%	20.0%	60.0%	0.0%	0.0%	0.0%																								
New Jersey	Dec. 18, 1787		25.0%	60.0%	20.0%	40.0%	20.0%	20.0%	66.7%	66.7%	83.3%	66.7%	50.0%																								
New Mexico	Jan. 6, 1912																																				
New York	July 26, 1788		50.0%	20.0%	50.0%	60.0%	50.0%	50.0%	29.4%	41.2%	52.9%	23.5%	41.2%																								
North Carolina	Nov. 21, 1789		60.0%	20.0%	50.0%	70.0%	40.0%	70.0%	33.3%	75.0%	58.3%	66.7%																									
North Dakota	Nov. 2, 1889																																				
Ohio	Mar. 1, 1803																																				
Oklahoma	Nov. 16, 1907																																				
Oregon	Feb. 14, 1859																																				
Pennsylvania	Dec. 12, 1787		50.0%	53.8%	46.2%	69.2%	53.8%	53.8%	50.0%	77.8%	61.1%	61.1%	55.6%																								
Rhode Island	May 29, 1790		100.0%	50.0%	100.0%	50.0%	50.0%	0.0%	50.0%	100.0%	50.0%	100.0%																									
South Carolina	May 23, 1788		80.0%	16.7%	50.0%	50.0%	66.7%	50.0%	50.0%	50.0%	75.0%	87.5%	37.5%																								
South Dakota	Nov. 2, 1889																																				
Tennessee	June 1, 1796																																				
Texas	Dec. 29, 1845																																				
Utah	Jan. 4, 1896																																				
Vermont	Mar. 4, 1791		0.0%	100.0%	50.0%	0.0%	100.0%	50.0%	0.0%	75.0%	75.0%	50.0%	50.0%																								
Virginia	June 25, 1788		80.0%	42.1%	78.9%	52.6%	52.6%	52.6%	59.1%	72.7%	86.4%	72.7%	68.2%																								
Washington	Nov. 11, 1889																																				
West Virginia	June 20, 1863																																				
Wisconsin	May 29, 1848																																				
Wyoming	July 10, 1890																																				

Historical Prevalence of Reelected Representatives in the U. S. House

Appendix IV — Reelected Incumbents in the U. S. House (RIP %)

Congress		13		14		15		16		17		18		19		20		21		22		23		24		25		26		27	
Start & End Dates		1813 Mar-04	1815 Mar-03	1815 Mar-04	1817 Mar-03	1817 Mar-04	1819 Mar-03	1819 Mar-04	1821 Mar-03	1821 Mar-04	1823 Mar-03	1823 Mar-04	1825 Mar-03	1825 Mar-04	1827 Mar-03	1827 Mar-04	1829 Mar-03	1829 Mar-04	1831 Mar-03	1831 Mar-04	1833 Mar-03	1833 Mar-04	1835 Mar-03	1835 Mar-04	1837 Mar-03	1837 Mar-04	1839 Mar-03	1839 Mar-04	1841 Mar-03	1841 Mar-04	1843 Mar-03
Congressional Year		1	2	1	2	1	2	1	2	1	2	1	2	1	2	1	2	1	2	1	2	1	2	1	2	1	2	1	2	1	2
Apportionment		3										4						5													
Total U. S.																															
Reelected Incumbents		84		100		60		95		90		107		129		135		120		126		107		136		116		118		127	
Size of House (adjusted)		182		183		185		186		187		213		213		213		213		213		240		242		242		242		242	
Size of House		182		183		185		186		187		213		213		213		213		213		240		242		242		242		242	
RIP %		46.2%		54.6%		32.4%		51.1%		48.1%		50.2%		60.6%		63.4%		56.3%		59.2%		44.6%		56.2%		47.9%		48.8%		52.5%	
State:	Admission																														
Alabama	Dec. 14, 1819																														
Alaska	Jan. 3, 1959																														
Arizona	Feb. 14, 1912																														
Arkansas	June 15, 1836																														
California	Sept. 9, 1850																														
Colorado	Aug. 1, 1876																														
Connecticut	Jan. 9, 1788	100.0%	100.0%	28.6%	14.3%	42.9%	66.7%	33.3%	83.3%	33.3%	100.0%	66.7%	33.3%	83.3%	33.3%	100.0%	66.7%	33.3%	100.0%	66.7%	0.0%	83.3%	0.0%	83.3%	0.0%	83.3%	0.0%	83.3%	0.0%	83.3%	
Delaware	Dec. 7, 1787	50.0%	50.0%	0.0%	100.0%	50.0%	100.0%	100.0%	100.0%	100.0%	100.0%	100.0%	100.0%	100.0%	100.0%	100.0%	100.0%	100.0%	100.0%	100.0%	0.0%	100.0%	100.0%	100.0%	100.0%	100.0%	100.0%	0.0%	100.0%	0.0%	
Florida	Mar. 3, 1845																														
Georgia	Jan. 2, 1788	66.7%	66.7%	16.7%	66.7%	33.3%	57.1%	71.4%	57.1%	71.4%	57.1%	71.4%	57.1%	71.4%	57.1%	71.4%	57.1%	71.4%	57.1%	71.4%	85.7%	44.4%	33.3%	100.0%	11.1%	100.0%	11.1%	100.0%	11.1%	100.0%	
Hawaii	Aug. 21, 1959																														
Idaho	July 3, 1890																														
Illinois	Dec. 3, 1818																														
Indiana	Dec. 11, 1816																														
Iowa	Dec. 28, 1846																														
Kansas	Jan. 29, 1861																														
Kentucky	June 1, 1792	50.0%	70.0%	30.0%	60.0%	50.0%	33.3%	75.0%	66.7%	66.7%	66.7%	66.7%	66.7%	66.7%	66.7%	66.7%	66.7%	66.7%	66.7%	66.7%	58.3%	53.8%	30.8%	53.8%	46.2%	69.2%	46.2%	69.2%	46.2%	69.2%	
Louisiana	Apr. 30, 1812	100.0%	100.0%	100.0%	0.0%	0.0%	0.0%	100.0%	100.0%	100.0%	100.0%	100.0%	100.0%	100.0%	100.0%	100.0%	100.0%	100.0%	100.0%	100.0%	33.3%	33.3%	100.0%	33.3%	100.0%	66.7%	33.3%	100.0%	66.7%	33.3%	
Maine	Mar. 15, 1820																														
Maryland	Apr. 28, 1788	77.8%	66.7%	55.6%	55.6%	66.7%	44.4%	33.3%	55.6%	44.4%	33.3%	55.6%	44.4%	33.3%	55.6%	44.4%	33.3%	55.6%	44.4%	33.3%	55.6%	44.4%	33.3%	55.6%	44.4%	33.3%	55.6%	44.4%	33.3%	55.6%	44.4%
Massachusetts	Feb. 6, 1788	35.0%	55.0%	30.0%	60.0%	38.5%	61.5%	76.9%	76.9%	76.9%	76.9%	76.9%	76.9%	76.9%	76.9%	76.9%	76.9%	76.9%	76.9%	76.9%	53.8%	66.7%	50.0%	75.0%	66.7%	75.0%	66.7%	75.0%	66.7%	75.0%	
Michigan	Jan. 26, 1837																														
Minnesota	May 11, 1858																														
Mississippi	Dec. 10, 1817																														
Missouri	Aug. 10, 1821																														
Montana	Nov. 8, 1889																														
Nebraska	Mar. 1, 1867																														
Nevada	Oct. 31, 1864																														
New Hampshire	June 21, 1788	0.0%	83.3%	0.0%	66.7%	50.0%	66.7%	33.3%	83.3%	16.7%	83.3%	16.7%	83.3%	16.7%	83.3%	16.7%	83.3%	16.7%	83.3%	16.7%	83.3%	40.0%	60.0%	40.0%	60.0%	40.0%	60.0%	40.0%	60.0%	40.0%	60.0%
New Jersey	Dec. 18, 1787	33.3%	33.3%	50.0%	83.3%	16.7%	83.3%	83.3%	83.3%	66.7%	50.0%	66.7%	50.0%	66.7%	50.0%	66.7%	50.0%	66.7%	50.0%	66.7%	66.7%	0.0%	100.0%	0.0%	100.0%	0.0%	100.0%	0.0%	100.0%	0.0%	100.0%
New Mexico	Jan. 6, 1912																														
New York	July 26, 1788	7.4%	37.0%	25.9%	14.8%	22.2%	26.5%	35.3%	44.1%	32.4%	23.5%	22.5%	52.5%	12.5%	30.0%	27.5%	46.2%	30.0%	27.5%	46.2%	30.0%	27.5%	46.2%	30.0%	27.5%	46.2%	30.0%	27.5%	46.2%	30.0%	27.5%
North Carolina	Nov. 21, 1789	53.8%	61.5%	30.8%	61.5%	53.8%	61.5%	46.2%	61.5%	61.5%	61.5%	46.2%	61.5%	61.5%	61.5%	61.5%	61.5%	61.5%	61.5%	61.5%	76.9%	76.9%	84.6%	76.9%	76.9%	84.6%	76.9%	76.9%	84.6%	76.9%	84.6%
North Dakota	Nov. 2, 1889																														
Ohio	Mar. 1, 1803	0.0%	100.0%	16.7%	50.0%	50.0%	28.6%	71.4%	78.6%	57.1%	78.6%	57.1%	78.6%	57.1%	78.6%	57.1%	78.6%	57.1%	78.6%	57.1%	78.6%	36.8%	68.4%	42.1%	47.4%	57.9%	47.4%	57.9%	47.4%	57.9%	
Oklahoma	Nov. 16, 1907																														
Oregon	Feb. 14, 1859																														
Pennsylvania	Dec. 12, 1787	60.9%	43.5%	43.5%	56.5%	47.8%	53.8%	65.4%	57.7%	46.2%	50.0%	46.4%	67.9%	39.3%	53.6%	53.6%	53.6%	53.6%	53.6%	53.6%	50.0%	100.0%	50.0%	100.0%	0.0%	100.0%	100.0%	100.0%	100.0%	100.0%	100.0%
Rhode Island	May 29, 1790	100.0%	0.0%	100.0%	0.0%	50.0%	100.0%	0.0%	100.0%	100.0%	100.0%	100.0%	100.0%	100.0%	100.0%	100.0%	100.0%	100.0%	100.0%	100.0%	100.0%	100.0%	100.0%	100.0%	100.0%	100.0%	100.0%	100.0%	100.0%	100.0%	100.0%
South Carolina	May 23, 1788	44.4%	33.3%	33.3%	55.6%	33.3%	55.6%	88.9%	66.7%	66.7%	66.7%	66.7%	66.7%	66.7%	66.7%	66.7%	66.7%	66.7%	66.7%	66.7%	66.7%	55.6%	55.6%	33.3%	55.6%	33.3%	55.6%	33.3%	55.6%	33.3%	55.6%
South Dakota	Nov. 2, 1889																														
Tennessee	June 1, 1796	50.0%	33.3%	16.7%	33.3%	100.0%	22.2%	66.7%	55.6%	77.8%	66.7%	38.5%	69.2%	46.2%	61.5%	69.2%	46.2%	61.5%	69.2%	46.2%	61.5%	69.2%	46.2%	61.5%	69.2%	46.2%	61.5%	69.2%	46.2%	61.5%	69.2%
Texas	Dec. 29, 1845																														
Utah	Jan. 4, 1896																														
Vermont	Mar. 4, 1791	33.3%	0.0%	0.0%	66.7%	50.0%	60.0%	40.0%	40.0%	60.0%	80.0%	60.0%	80.0%	60.0%	80.0%	60.0%	80.0%	60.0%	80.0%	60.0%	80.0%	60.0%	80.0%	60.0%	80.0%	60.0%	80.0%	60.0%	80.0%	60.0%	80.0%
Virginia	June 25, 1788	69.6%	73.9%	47.8%	69.6%	73.9%	86.4%	68.2%	72.7%	81.8%	77.3%	47.6%	47.6%	66.7%	66.7%	66.7%	66.7%	66.7%	66.7%	66.7%	77.3%	47.6%	47.6%	66.7%	66.7%	66.7%	66.7%	66.7%	66.7%	66.7%	66.7%
Washington	Nov. 11, 1889																														
West Virginia	June 20, 1863																														
Wisconsin	May 29, 1848																														
Wyoming	July 10, 1890																														

Historical Prevalence of Reelected Representatives in the U. S. House

Appendix IV — Reelected Incumbents in the U. S. House (RIP %)

Congress		28		29		30		31		32		33		34		35		36		37		38		39		40		41		42	
Start & End Dates		1843	1845	1845	1847	1847	1849	1849	1851	1851	1853	1853	1855	1855	1857	1857	1859	1859	1861	1861	1863	1863	1865	1865	1867	1867	1869	1869	1871	1871	1873
Congressional Year		Mar-04	Mar-03	Mar-04	Mar-03	Mar-04	Mar-03	Mar-04	Mar-03	Mar-04	Mar-03	Mar-04	Mar-03	Mar-04	Mar-03	Mar-04	Mar-03	Mar-04	Mar-03	Mar-04	Mar-03	Mar-04	Mar-03	Mar-04	Mar-03	Mar-04	Mar-03	Mar-04	Mar-03	Mar-04	Mar-03
Apportionment		6						7						8																	
Total U. S.																															
Relected Incumbents		58	108	100	98	97	83	89	119	116	83	69	98	113	124	116															
Size of House (adjusted)		223	228	230	233	233	234	234	237	238	238	242	242	243	243	243															
Size of House		223	228	230	233	233	234	234	237	238	238	242	242	243	243	243															
RIP %		26.0%	47.4%	43.5%	42.1%	41.6%	35.5%	38.0%	50.2%	48.7%	34.9%	28.5%	40.5%	46.5%	51.0%	47.7%															
State:	Admission																														
Alabama	Dec. 14, 1819	57.1%	57.1%	28.6%	71.4%	28.6%	71.4%	71.4%	57.1%	71.4%	0.0%	0.0%	0.0%	0.0%	16.7%	50.0%															
Alaska	Jan. 3, 1959																														
Arizona	Feb. 14, 1912																														
Arkansas	June 15, 1836	100.0%	0.0%	0.0%	100.0%	100.0%	0.0%	50.0%	50.0%	0.0%	50.0%	0.0%	0.0%	0.0%	66.7%	33.3%															
California	Sept. 9, 1850			0.0%	0.0%	0.0%	0.0%	0.0%	0.0%	50.0%	0.0%	0.0%	0.0%	33.3%	33.3%	66.7%	33.3%														
Colorado	Aug. 1, 1876																														
Connecticut	Jan. 9, 1788	0.0%	0.0%	100.0%	0.0%	25.0%	50.0%	0.0%	50.0%	0.0%	50.0%	25.0%	75.0%	0.0%	50.0%	100.0%															
Delaware	Dec. 7, 1787	100.0%	0.0%	100.0%	100.0%	0.0%	100.0%	0.0%	100.0%	0.0%	100.0%	0.0%	0.0%	100.0%	0.0%	100.0%	0.0%	100.0%	0.0%	100.0%	0.0%	100.0%	0.0%	100.0%	0.0%	100.0%	0.0%	100.0%	0.0%	100.0%	0.0%
Florida	Mar. 3, 1845		0.0%	100.0%	100.0%	100.0%	0.0%	100.0%	0.0%	100.0%	0.0%	0.0%	0.0%	0.0%	100.0%	0.0%	0.0%	0.0%	0.0%	0.0%	0.0%	0.0%	0.0%	0.0%	0.0%	0.0%	0.0%	100.0%	0.0%	0.0%	0.0%
Georgia	Jan. 2, 1788	25.0%	50.0%	75.0%	62.5%	37.5%	50.0%	25.0%	50.0%	50.0%	0.0%	0.0%	0.0%	0.0%	71.4%	0.0%															
Hawaii	Aug. 21, 1959																														
Idaho	July 3, 1890																														
Illinois	Dec. 3, 1818	0.0%	85.7%	71.4%	42.9%	28.6%	44.4%	55.6%	33.3%	66.7%	77.8%	42.9%	28.6%	71.4%	64.3%	71.4%															
Indiana	Dec. 11, 1816	10.0%	70.0%	50.0%	10.0%	40.0%	45.5%	27.3%	36.4%	72.7%	36.4%	54.5%	45.5%	54.5%	72.7%	81.8%															
Iowa	Dec. 28, 1846		0.0%	0.0%	100.0%	0.0%	50.0%	0.0%	0.0%	50.0%	100.0%	16.7%	100.0%	66.7%	33.3%	33.3%															
Kansas	Jan. 29, 1861									0.0%	0.0%	0.0%	0.0%	100.0%	100.0%	0.0%															
Kentucky	June 1, 1792	40.0%	50.0%	10.0%	30.0%	40.0%	50.0%	20.0%	60.0%	30.0%	20.0%	44.4%	44.4%	22.2%	66.7%	55.6%															
Louisiana	Apr. 30, 1812	25.0%	50.0%	100.0%	75.0%	0.0%	0.0%	0.0%	100.0%	50.0%	0.0%	0.0%	0.0%	0.0%	20.0%	60.0%															
Maine	Mar. 15, 1820	0.0%	42.9%	14.3%	0.0%	14.3%	50.0%	33.3%	50.0%	0.0%	40.0%	80.0%	80.0%	80.0%	60.0%	80.0%															
Maryland	Apr. 28, 1788	16.7%	0.0%	33.3%	33.3%	66.7%	16.7%	0.0%	83.3%	66.7%	16.7%	40.0%	60.0%	60.0%	40.0%	60.0%															
Massachusetts	Feb. 6, 1788	60.0%	70.0%	90.0%	60.0%	40.0%	27.3%	18.2%	81.8%	45.5%	81.8%	60.0%	100.0%	80.0%	80.0%	100.0%															
Michigan	Jan. 26, 1837	0.0%	66.7%	33.3%	33.3%	0.0%	0.0%	0.0%	75.0%	75.0%	25.0%	33.3%	66.7%	83.3%	50.0%	66.7%															
Minnesota	May 11, 1858								0.0%	0.0%	100.0%	50.0%	100.0%	100.0%	0.0%	0.0%															
Mississippi	Dec. 10, 1817	25.0%	50.0%	25.0%	75.0%	25.0%	0.0%	40.0%	40.0%	80.0%	0.0%	0.0%	0.0%	0.0%	0.0%	100.0%															
Missouri	Aug. 10, 1821	0.0%	40.0%	40.0%	80.0%	40.0%	28.6%	71.4%	28.6%	85.7%	57.1%	44.4%	33.3%	66.7%	33.3%	44.4%															
Montana	Nov. 8, 1889																														
Nebraska	Mar. 1, 1867													0.0%	100.0%	100.0%															
Nevada	Oct. 31, 1864													0.0%	0.0%	100.0%	0.0%	0.0%													
New Hampshire	June 21, 1788	50.0%	25.0%	25.0%	75.0%	75.0%	33.3%	0.0%	100.0%	33.3%	66.7%	33.3%	66.7%	0.0%	100.0%	0.0%															
New Jersey	Dec. 18, 1787	0.0%	40.0%	40.0%	40.0%	20.0%	40.0%	40.0%	40.0%	20.0%	40.0%	40.0%	40.0%	20.0%	40.0%	40.0%															
New Mexico	Jan. 6, 1912																														
New York	July 26, 1788	8.8%	32.4%	14.7%	29.4%	23.5%	15.2%	30.3%	30.3%	39.4%	30.3%	32.3%	38.7%	45.2%	41.9%	22.6%															
North Carolina	Nov. 21, 1789	66.7%	44.4%	33.3%	55.6%	77.8%	25.0%	50.0%	62.5%	62.5%	0.0%	0.0%	0.0%	0.0%	71.4%	28.6%															
North Dakota	Nov. 2, 1889																														
Ohio	Mar. 1, 1803	19.0%	47.6%	38.1%	47.6%	42.9%	33.3%	38.1%	57.1%	38.1%	61.9%	31.6%	36.8%	78.9%	52.6%	57.9%															
Oklahoma	Nov. 16, 1907																														
Oregon	Feb. 14, 1859								0.0%	0.0%	0.0%	0.0%	0.0%	0.0%	0.0%	0.0%															
Pennsylvania	Dec. 12, 1787	25.0%	54.2%	45.8%	37.5%	37.5%	44.0%	24.0%	44.0%	32.0%	60.0%	37.5%	66.7%	70.8%	54.2%	45.8%															
Rhode Island	May 29, 1790	0.0%	50.0%	0.0%	0.0%	50.0%	50.0%	50.0%	50.0%	50.0%	0.0%	0.0%	100.0%	100.0%	100.0%	0.0%															
South Carolina	May 23, 1788	42.9%	85.7%	100.0%	71.4%	85.7%	50.0%	100.0%	83.3%	83.3%	0.0%	0.0%	0.0%	0.0%	50.0%	25.0%															
South Dakota	Nov. 2, 1889																														
Tennessee	June 1, 1796	27.3%	45.5%	63.6%	45.5%	72.7%	40.0%	50.0%	70.0%	30.0%	20.0%	0.0%	0.0%	50.0%	62.5%	25.0%															
Texas	Dec. 29, 1845		0.0%	100.0%	50.0%	50.0%	0.0%	50.0%	0.0%	50.0%	0.0%	0.0%	0.0%	0.0%	0.0%	50.0%															
Utah	Jan. 4, 1896																														
Vermont	Mar. 4, 1791	0.0%	100.0%	50.0%	75.0%	50.0%	33.3%	66.7%	33.3%	100.0%	66.7%	66.7%	100.0%	33.3%	66.7%	100.0%															
Virginia	June 25, 1788	60.0%	46.7%	46.7%	26.7%	66.7%	69.2%	92.3%	69.2%	61.5%	7.7%	12.5%	0.0%	0.0%	0.0%	25.0%															
Washington	Nov. 11, 1889																														
West Virginia	June 20, 1863												100.0%	33.3%	33.3%	0.0%	33.3%														
Wisconsin	May 29, 1848			0.0%	0.0%	66.7%	33.3%	33.3%	66.7%	66.7%	33.3%	0.0%	66.7%	66.7%	100.0%	33.3%															
Wyoming	July 10, 1890																														

Historical Prevalence of Reelected Representatives in the U. S. House

Appendix IV — Reelected Incumbents in the U. S. House (RIP %)

Congress		43		44		45		46		47		48		49		50		51		52		53		54		55		56		57	
Start & End Dates		1873	1875	1875	1877	1877	1879	1881	1881	1883	1883	1885	1885	1887	1887	1889	1889	1891	1891	1893	1893	1895	1895	1897	1897	1899	1899	1901	1901	1903	1903
Congressional Year		Mar-04	Mar-03	Mar-04	Mar-03	Mar-04	Mar-03	Mar-04	Mar-03	Mar-04	Mar-03	Mar-04	Mar-03	Mar-04	Mar-03	Mar-04	Mar-03	Mar-04	Mar-03	Mar-04	Mar-03	Mar-04	Mar-03	Mar-04	Mar-03	Mar-04	Mar-03	Mar-04	Mar-03	Mar-04	Mar-03
Apportionment		9										10										11									
Total U. S.																															
Relected Incumbents		125	114	153	159	187	147	188	196	205	176	207	178	210	249	264															
Size of House (adjusted)		292	293	293	293	293	325	325	325	332	332	356	357	357	357	357															
Size of House		292	293	293	293	293	325	325	325	332	332	356	357	357	357	357															
RIP %		42.8%	38.9%	52.2%	54.3%	63.8%	45.2%	57.8%	60.3%	61.7%	53.0%	58.1%	49.9%	58.8%	69.7%	73.9%															
State:	Admission																														
Alabama	Dec. 14, 1819	25.0%	25.0%	37.5%	37.5%	62.5%	75.0%	50.0%	75.0%	75.0%	100.0%	66.7%	66.7%	66.7%	88.9%	66.7%															
Alaska	Jan. 3, 1959																														
Arizona	Feb. 14, 1912																														
Arkansas	June 15, 1836	25.0%	50.0%	75.0%	75.0%	75.0%	40.0%	100.0%	100.0%	80.0%	80.0%	50.0%	83.3%	83.3%	100.0%	83.3%															
California	Sept. 9, 1850	25.0%	50.0%	75.0%	75.0%	75.0%	16.7%	16.7%	50.0%	66.7%	16.7%	57.1%	57.1%	57.1%	42.9%	57.1%															
Colorado	Aug. 1, 1876		0.0%	100.0%	100.0%	100.0%	100.0%	0.0%	100.0%	0.0%	100.0%	0.0%	50.0%	100.0%	100.0%	100.0%															
Connecticut	Jan. 9, 1788	75.0%	50.0%	75.0%	50.0%	75.0%	25.0%	75.0%	0.0%	25.0%	50.0%	75.0%	25.0%	100.0%	100.0%	100.0%															
Delaware	Dec. 7, 1787	0.0%	0.0%	100.0%	0.0%	100.0%	0.0%	100.0%	0.0%	100.0%	0.0%	100.0%	0.0%	0.0%	0.0%	0.0%	0.0%														
Florida	Mar. 3, 1845	50.0%	100.0%	0.0%	50.0%	50.0%	100.0%	50.0%	100.0%	50.0%	50.0%	50.0%	50.0%	50.0%	100.0%	100.0%															
Georgia	Jan. 2, 1788	22.2%	44.4%	100.0%	55.6%	55.6%	50.0%	70.0%	70.0%	90.0%	40.0%	54.5%	90.9%	45.5%	100.0%	100.0%															
Hawaii	Aug. 21, 1959																														
Idaho	July 3, 1890									0.0%	100.0%	100.0%	0.0%	0.0%	0.0%	0.0%															
Illinois	Dec. 3, 1818	26.3%	36.8%	52.6%	57.9%	68.4%	50.0%	75.0%	70.0%	70.0%	60.0%	54.5%	36.4%	68.2%	63.6%	72.7%															
Indiana	Dec. 11, 1816	61.5%	23.1%	46.2%	38.5%	46.2%	61.5%	61.5%	61.5%	53.8%	69.2%	7.7%	53.8%	76.9%	92.3%	100.0%															
Iowa	Dec. 28, 1846	44.4%	55.6%	22.2%	44.4%	55.6%	36.4%	45.5%	63.6%	54.5%	36.4%	45.5%	81.8%	100.0%	54.5%	72.7%															
Kansas	Jan. 29, 1861	33.3%	33.3%	33.3%	66.7%	100.0%	42.9%	100.0%	85.7%	100.0%	14.3%	62.5%	37.5%	25.0%	25.0%	75.0%															
Kentucky	June 1, 1792	50.0%	30.0%	50.0%	70.0%	90.0%	54.5%	45.5%	54.5%	63.6%	90.9%	72.7%	18.2%	45.5%	63.6%	54.5%															
Louisiana	Apr. 30, 1812	66.7%	33.3%	50.0%	83.3%	66.7%	50.0%	33.3%	33.3%	66.7%	66.7%	83.3%	83.3%	50.0%	83.3%	100.0%															
Maine	Mar. 15, 1820	60.0%	100.0%	40.0%	60.0%	100.0%	50.0%	100.0%	100.0%	100.0%	100.0%	100.0%	100.0%	100.0%	100.0%	100.0%															
Maryland	Apr. 28, 1788	33.3%	33.3%	66.7%	50.0%	50.0%	50.0%	33.3%	66.7%	66.7%	50.0%	66.7%	16.7%	16.7%	33.3%	50.0%															
Massachusetts	Feb. 6, 1788	54.5%	36.4%	27.3%	81.8%	72.7%	50.0%	75.0%	58.3%	25.0%	58.3%	53.8%	61.5%	69.2%	76.9%	76.9%															
Michigan	Jan. 26, 1837	33.3%	66.7%	33.3%	66.7%	55.6%	18.2%	45.5%	54.5%	63.6%	54.5%	50.0%	50.0%	50.0%	66.7%	91.7%															
Minnesota	May 11, 1858	66.7%	66.7%	66.7%	33.3%	66.7%	40.0%	80.0%	20.0%	20.0%	14.3%	57.1%	71.4%	100.0%	100.0%	100.0%															
Mississippi	Dec. 10, 1817	33.3%	33.3%	50.0%	100.0%	100.0%	71.4%	42.9%	57.1%	85.7%	71.4%	71.4%	42.9%	85.7%	57.1%	57.1%															
Missouri	Aug. 10, 1821	30.8%	53.8%	61.5%	23.1%	61.5%	35.7%	42.9%	85.7%	64.3%	57.1%	66.7%	46.7%	26.7%	86.7%	93.3%															
Montana	Nov. 8, 1889									0.0%	0.0%	0.0%	100.0%	0.0%	0.0%	0.0%															
Nebraska	Mar. 1, 1867	0.0%	100.0%	0.0%	0.0%	100.0%	33.3%	66.7%	66.7%	66.7%	66.7%	50.0%	66.7%	33.3%	66.7%	83.3%															
Nevada	Oct. 31, 1864	100.0%	0.0%	0.0%	0.0%	0.0%	100.0%	0.0%	100.0%	0.0%	100.0%	0.0%	100.0%	0.0%	100.0%	100.0%															
New Hampshire	June 21, 1788	33.3%	0.0%	66.7%	33.3%	100.0%	50.0%	50.0%	50.0%	0.0%	0.0%	50.0%	50.0%	100.0%	100.0%	50.0%															
New Jersey	Dec. 18, 1787	14.3%	28.6%	57.1%	28.6%	28.6%	14.3%	28.6%	85.7%	42.9%	57.1%	37.5%	25.0%	100.0%	75.0%	87.5%															
New Mexico	Jan. 6, 1912																														
New York	July 26, 1788	48.5%	30.3%	36.4%	42.4%	60.6%	35.3%	50.0%	50.0%	55.9%	47.1%	58.8%	38.2%	73.5%	47.1%	61.8%															
North Carolina	Nov. 21, 1789	50.0%	50.0%	75.0%	50.0%	37.5%	44.4%	55.6%	33.3%	55.6%	44.4%	66.7%	22.2%	66.7%	44.4%	55.6%															
North Dakota	Nov. 2, 1889																														
Ohio	Mar. 1, 1803	25.0%	50.0%	50.0%	50.0%	55.0%	42.9%	47.6%	61.9%	71.4%	28.6%	52.4%	38.1%	52.4%	81.0%	57.1%															
Oklahoma	Nov. 16, 1907																														
Oregon	Feb. 14, 1859	0.0%	0.0%	0.0%	0.0%	0.0%	100.0%	0.0%	100.0%	100.0%	100.0%	100.0%	50.0%	100.0%	50.0%	100.0%															
Pennsylvania	Dec. 12, 1787	48.1%	29.6%	44.4%	55.6%	55.6%	50.0%	60.7%	57.1%	53.6%	46.4%	56.7%	63.3%	53.3%	60.0%	66.7%															
Rhode Island	May 29, 1790	100.0%	50.0%	100.0%	50.0%	50.0%	100.0%	50.0%	50.0%	100.0%	0.0%	100.0%	0.0%	50.0%	100.0%	100.0%															
South Carolina	May 23, 1788	60.0%	40.0%	40.0%	40.0%	100.0%	85.7%	85.7%	71.4%	100.0%	42.9%	28.6%	71.4%	100.0%	85.7%	71.4%															
South Dakota	Nov. 2, 1889									0.0%	50.0%	50.0%	0.0%	0.0%	0.0%	50.0%															
Tennessee	June 1, 1796	40.0%	40.0%	90.0%	60.0%	70.0%	50.0%	60.0%	50.0%	70.0%	70.0%	90.0%	60.0%	40.0%	0.0%	80.0%															
Texas	Dec. 29, 1845	50.0%	33.3%	83.3%	66.7%	100.0%	36.4%	81.8%	63.6%	100.0%	81.8%	46.2%	76.9%	30.8%	84.6%	84.6%															
Utah	Jan. 4, 1896																														
Vermont	Mar. 4, 1791	66.7%	33.3%	100.0%	33.3%	66.7%	0.0%	50.0%	100.0%	100.0%	50.0%	100.0%	100.0%	100.0%	100.0%	0.0%															
Virginia	June 25, 1788	33.3%	33.3%	77.8%	66.7%	33.3%	60.0%	60.0%	20.0%	50.0%	70.0%	70.0%	60.0%	50.0%	90.0%	80.0%															
Washington	Nov. 11, 1889																														
West Virginia	June 20, 1863	66.7%	33.3%	33.3%	100.0%	66.7%	25.0%	100.0%	75.0%	25.0%	75.0%	100.0%	0.0%	75.0%	50.0%	50.0%															
Wisconsin	May 29, 1848	75.0%	25.0%	37.5%	87.5%	87.5%	22.2%	44.4%	66.7%	55.6%	33.3%	50.0%	20.0%	90.0%	80.0%	90.0%															
Wyoming	July 10, 1890									0.0%	0.0%	0.0%	0.0%	0.0%	0.0%	100.0%															

Historical Prevalence of Reelected Representatives in the U. S. House

Appendix IV — Reelected Incumbents in the U. S. House (RIP %)

Congress		73		74		75		76		77		78		79		80		81		82		83		84		85		86		87	
Start & End Dates		1933	1935	1935	1937	1937	1939	1941	1941	1943	1943	1943	1945	1945	1947	1947	1949	1949	1951	1951	1953	1953	1955	1955	1957	1957	1959	1959	1961	1961	1963
Congressional Year		Mar-04	Jan-03	Jan-04	Jan-03	Jan-04	Jan-03	Jan-04	Jan-03	Jan-04	Jan-03	Jan-04	Jan-03	Jan-04	Jan-03	Jan-04	Jan-03	Jan-04	Jan-03	Jan-04	Jan-03	Jan-04	Jan-03	Jan-04	Jan-03	Jan-04	Jan-03	Jan-04	Jan-03	Jan-04	Jan-03
Apportionment		15										16										17									
Total U. S.																															
Relected Incumbents		270	325	339	319	360	329	356	329	317	362	354	379	389	354	375															
Size of House (adjusted)		435	435	435	435	435	435	435	435	435	435	435	435	435	435	435	435	435	435	435	435	435	435	435	435	435	437	437	437	437	
Size of House		435	435	435	435	435	435	435	435	435	435	435	435	435	435	435	435	435	435	435	435	435	435	435	435	435	437	437	437	437	
RIP %		62.1%	74.7%	77.9%	73.3%	82.8%	75.6%	81.8%	75.6%	72.9%	83.2%	81.4%	87.1%	89.4%	81.0%	85.8%															
State:	Admission																														
Alabama	Dec. 14, 1819	100.0%	77.8%	66.7%	100.0%	88.9%	88.9%	77.8%	88.9%	77.8%	88.9%	88.9%	100.0%	100.0%	100.0%	100.0%	100.0%	100.0%	100.0%	100.0%	100.0%	100.0%	100.0%	100.0%	100.0%	100.0%	100.0%	100.0%	100.0%	100.0%	
Alaska	Jan. 3, 1959																											0.0%	100.0%	100.0%	
Arizona	Feb. 14, 1912	100.0%	100.0%	0.0%	100.0%	100.0%	50.0%	100.0%	100.0%	50.0%	100.0%	100.0%	50.0%	100.0%	100.0%	100.0%	100.0%	100.0%	100.0%	100.0%	100.0%	100.0%	100.0%	100.0%	100.0%	100.0%	100.0%	100.0%	100.0%	100.0%	
Arkansas	June 15, 1836	85.7%	85.7%	85.7%	42.9%	85.7%	71.4%	85.7%	100.0%	85.7%	100.0%	100.0%	85.7%	100.0%	100.0%	100.0%	100.0%	100.0%	100.0%	100.0%	100.0%	100.0%	100.0%	100.0%	100.0%	100.0%	83.3%	100.0%	100.0%	100.0%	
California	Sept. 9, 1850	30.0%	75.0%	80.0%	75.0%	90.0%	73.9%	69.6%	69.6%	78.3%	87.0%	63.3%	86.7%	90.0%	86.7%	90.0%	90.0%	90.0%	90.0%	90.0%	90.0%	90.0%	90.0%	90.0%	90.0%	90.0%	86.7%	90.0%	90.0%	90.0%	
Colorado	Aug. 1, 1876	25.0%	100.0%	100.0%	100.0%	100.0%	50.0%	100.0%	100.0%	75.0%	50.0%	100.0%	100.0%	100.0%	100.0%	100.0%	100.0%	100.0%	100.0%	100.0%	100.0%	100.0%	100.0%	100.0%	100.0%	100.0%	75.0%	100.0%	100.0%	100.0%	
Connecticut	Jan. 9, 1788	16.7%	50.0%	66.7%	33.3%	33.3%	16.7%	33.3%	0.0%	50.0%	66.7%	66.7%	100.0%	100.0%	100.0%	100.0%	100.0%	100.0%	100.0%	100.0%	100.0%	100.0%	100.0%	100.0%	100.0%	83.3%	0.0%	66.7%	66.7%	66.7%	
Delaware	Dec. 7, 1787	0.0%	0.0%	0.0%	0.0%	0.0%	0.0%	0.0%	0.0%	0.0%	100.0%	100.0%	0.0%	100.0%	100.0%	100.0%	100.0%	100.0%	100.0%	100.0%	100.0%	100.0%	100.0%	100.0%	100.0%	100.0%	0.0%	0.0%	100.0%	100.0%	
Florida	Mar. 3, 1845	20.0%	100.0%	80.0%	80.0%	80.0%	83.3%	83.3%	83.3%	83.3%	66.7%	66.7%	62.5%	75.0%	100.0%	100.0%	100.0%	100.0%	100.0%	100.0%	100.0%	100.0%	100.0%	100.0%	100.0%	100.0%	100.0%	100.0%	100.0%	100.0%	
Georgia	Jan. 2, 1788	70.0%	80.0%	90.0%	90.0%	90.0%	90.0%	90.0%	100.0%	90.0%	60.0%	100.0%	90.0%	80.0%	100.0%	100.0%	100.0%	100.0%	100.0%	100.0%	100.0%	100.0%	100.0%	100.0%	100.0%	100.0%	100.0%	100.0%	100.0%	70.0%	
Hawaii	Aug. 21, 1959																										0.0%	100.0%	100.0%		
Idaho	July 3, 1890	0.0%	50.0%	100.0%	50.0%	100.0%	100.0%	100.0%	0.0%	50.0%	0.0%	50.0%	100.0%	100.0%	100.0%	100.0%	100.0%	100.0%	100.0%	100.0%	100.0%	100.0%	100.0%	100.0%	100.0%	100.0%	100.0%	100.0%	100.0%	50.0%	
Illinois	Dec. 3, 1818	48.1%	66.7%	74.1%	70.4%	74.1%	61.5%	80.8%	76.9%	65.4%	73.1%	96.0%	88.0%	84.0%	72.0%	88.0%	88.0%	88.0%	88.0%	88.0%	88.0%	88.0%	88.0%	88.0%	88.0%	88.0%	88.0%	88.0%	88.0%	88.0%	
Indiana	Dec. 11, 1816	58.3%	91.7%	100.0%	50.0%	91.7%	81.8%	100.0%	90.9%	36.4%	54.5%	90.9%	90.9%	90.9%	45.5%	63.6%	63.6%	63.6%	63.6%	63.6%	63.6%	63.6%	63.6%	63.6%	63.6%	63.6%	63.6%	45.5%	63.6%	63.6%	
Iowa	Dec. 28, 1846	44.4%	77.8%	66.7%	55.6%	88.9%	87.5%	87.5%	100.0%	87.5%	100.0%	100.0%	87.5%	87.5%	62.5%	87.5%	87.5%	87.5%	87.5%	87.5%	87.5%	87.5%	87.5%	87.5%	87.5%	87.5%	87.5%	62.5%	87.5%	87.5%	
Kansas	Jan. 29, 1861	71.4%	57.1%	85.7%	85.7%	100.0%	100.0%	83.3%	66.7%	100.0%	83.3%	83.3%	83.3%	83.3%	66.7%	33.3%	33.3%	33.3%	33.3%	33.3%	33.3%	33.3%	33.3%	33.3%	33.3%	33.3%	66.7%	33.3%	33.3%	33.3%	
Kentucky	June 1, 1792	77.8%	77.8%	77.8%	100.0%	100.0%	100.0%	77.8%	77.8%	66.7%	100.0%	100.0%	87.5%	100.0%	100.0%	100.0%	100.0%	100.0%	100.0%	100.0%	100.0%	100.0%	100.0%	100.0%	100.0%	100.0%	75.0%	100.0%	100.0%	100.0%	
Louisiana	Apr. 30, 1812	87.5%	100.0%	37.5%	100.0%	37.5%	50.0%	100.0%	75.0%	87.5%	100.0%	100.0%	75.0%	100.0%	100.0%	100.0%	100.0%	100.0%	100.0%	100.0%	100.0%	100.0%	100.0%	100.0%	100.0%	100.0%	100.0%	87.5%	100.0%	100.0%	
Maine	Mar. 15, 1820	33.3%	33.3%	33.3%	100.0%	66.7%	66.7%	100.0%	66.7%	100.0%	100.0%	100.0%	66.7%	100.0%	100.0%	100.0%	100.0%	100.0%	100.0%	100.0%	100.0%	100.0%	100.0%	100.0%	100.0%	100.0%	66.7%	66.7%	33.3%	33.3%	
Maryland	Apr. 28, 1788	83.3%	100.0%	100.0%	66.7%	83.3%	50.0%	66.7%	66.7%	83.3%	83.3%	83.3%	57.1%	85.7%	100.0%	100.0%	100.0%	100.0%	100.0%	100.0%	100.0%	100.0%	100.0%	100.0%	100.0%	100.0%	100.0%	57.1%	85.7%	85.7%	
Massachusetts	Feb. 6, 1788	93.3%	80.0%	80.0%	100.0%	93.3%	71.4%	92.9%	85.7%	92.9%	100.0%	78.6%	92.9%	100.0%	100.0%	100.0%	100.0%	100.0%	100.0%	100.0%	100.0%	100.0%	100.0%	100.0%	100.0%	100.0%	78.6%	92.9%	92.9%	92.9%	
Michigan	Jan. 26, 1837	41.2%	52.9%	76.5%	76.5%	94.1%	88.2%	94.1%	82.4%	82.4%	76.5%	72.2%	77.8%	77.8%	94.4%	94.4%	94.4%	94.4%	94.4%	94.4%	94.4%	94.4%	94.4%	94.4%	94.4%	94.4%	94.4%	94.4%	94.4%	94.4%	
Minnesota	May 11, 1858	22.2%	44.4%	66.7%	55.6%	77.8%	77.8%	77.8%	66.7%	66.7%	100.0%	100.0%	88.9%	100.0%	100.0%	100.0%	100.0%	100.0%	100.0%	100.0%	100.0%	100.0%	100.0%	100.0%	100.0%	100.0%	66.7%	88.9%	88.9%	88.9%	
Mississippi	Dec. 10, 1817	85.7%	57.1%	85.7%	100.0%	100.0%	71.4%	100.0%	71.4%	85.7%	100.0%	100.0%	85.7%	100.0%	100.0%	100.0%	100.0%	100.0%	100.0%	100.0%	100.0%	100.0%	100.0%	100.0%	100.0%	100.0%	100.0%	100.0%	100.0%	100.0%	
Missouri	Aug. 10, 1821	61.5%	61.5%	92.3%	100.0%	76.9%	53.8%	84.6%	69.2%	23.1%	84.6%	72.7%	81.8%	90.9%	100.0%	100.0%	100.0%	100.0%	100.0%	100.0%	100.0%	100.0%	100.0%	100.0%	100.0%	100.0%	100.0%	100.0%	100.0%	81.8%	
Montana	Nov. 8, 1889	0.0%	100.0%	0.0%	50.0%	50.0%	50.0%	100.0%	100.0%	100.0%	100.0%	100.0%	50.0%	100.0%	100.0%	100.0%	100.0%	100.0%	100.0%	100.0%	100.0%	100.0%	100.0%	100.0%	100.0%	100.0%	50.0%	100.0%	100.0%	0.0%	
Nebraska	Mar. 1, 1867	60.0%	0.0%	100.0%	60.0%	80.0%	50.0%	100.0%	100.0%	100.0%	100.0%	75.0%	75.0%	50.0%	100.0%	100.0%	100.0%	100.0%	100.0%	100.0%	100.0%	100.0%	100.0%	100.0%	100.0%	100.0%	75.0%	50.0%	50.0%	50.0%	
Nevada	Oct. 31, 1864	0.0%	100.0%	100.0%	100.0%	100.0%	0.0%	0.0%	0.0%	0.0%	100.0%	100.0%	0.0%	100.0%	100.0%	100.0%	100.0%	100.0%	100.0%	100.0%	100.0%	100.0%	100.0%	100.0%	100.0%	100.0%	100.0%	100.0%	100.0%	100.0%	
New Hampshire	June 21, 1788	50.0%	100.0%	50.0%	50.0%	100.0%	50.0%	100.0%	50.0%	100.0%	100.0%	100.0%	50.0%	100.0%	100.0%	100.0%	100.0%	100.0%	100.0%	100.0%	100.0%	100.0%	100.0%	100.0%	100.0%	100.0%	100.0%	100.0%	100.0%	100.0%	
New Jersey	Dec. 18, 1787	78.6%	92.9%	71.4%	71.4%	85.7%	78.6%	85.7%	100.0%	78.6%	85.7%	92.9%	85.7%	92.9%	85.7%	92.9%	92.9%	92.9%	92.9%	92.9%	92.9%	92.9%	92.9%	92.9%	92.9%	92.9%	92.9%	71.4%	92.9%	92.9%	
New Mexico	Jan. 6, 1912	100.0%	0.0%	100.0%	100.0%	0.0%	50.0%	100.0%	50.0%	100.0%	50.0%	100.0%	100.0%	50.0%	100.0%	100.0%	100.0%	100.0%	100.0%	100.0%	100.0%	100.0%	100.0%	100.0%	100.0%	100.0%	50.0%	100.0%	100.0%	100.0%	
New York	July 26, 1788	82.2%	75.6%	84.4%	82.2%	88.9%	84.4%	75.6%	77.8%	77.8%	77.8%	79.1%	93.0%	90.7%	83.7%	88.4%	88.4%	88.4%	88.4%	88.4%	88.4%	88.4%	88.4%	88.4%	88.4%	88.4%	88.4%	83.7%	88.4%	88.4%	
North Carolina	Nov. 21, 1789	90.9%	90.9%	100.0%	72.7%	90.9%	91.7%	91.7%	75.0%	83.3%	91.7%	66.7%	100.0%	66.7%	100.0%	100.0%	100.0%	100.0%	100.0%	100.0%	100.0%	100.0%	100.0%	100.0%	100.0%	100.0%	66.7%	91.7%	83.3%	83.3%	
North Dakota	Nov. 2, 1889	50.0%	50.0%	100.0%	100.0%	50.0%	50.0%	100.0%	50.0%	100.0%	100.0%	50.0%	100.0%	100.0%	100.0%	100.0%	100.0%	100.0%	100.0%	100.0%	100.0%	100.0%	100.0%	100.0%	100.0%	100.0%	0.0%	50.0%	50.0%	50.0%	
Ohio	Mar. 1, 1803	58.3%	95.8%	58.3%	45.8%	75.0%	56.5%	87.0%	91.3%	65.2%	73.9%	91.3%	95.7%	78.3%	78.3%	78.3%	78.3%	78.3%	78.3%	78.3%	78.3%	78.3%	78.3%	78.3%	78.3%	78.3%	78.3%	78.3%	78.3%	78.3%	
Oklahoma	Nov. 16, 1907	77.8%	44.4%	77.8%	88.9%	88.9%	87.5%	87.5%	50.0%	50.0%	62.5%	83.3%	10																		

Historical Prevalence of Reelected Representatives in the U. S. House

Appendix IV — Reelected Incumbents in the U. S. House (RIP %)

Congress	103		104		105		106		107		108		109		110		111		112	
Start & End Dates	1993 Jan-04	1995 Jan-03	1995 Jan-04	1997 Jan-03	1997 Jan-04	1999 Jan-03	2001 Jan-04	2001 Jan-03	2003 Jan-04	2003 Jan-03	2005 Jan-04	2005 Jan-03	2007 Jan-04	2007 Jan-03	2009 Jan-04	2009 Jan-03	2011 Jan-04	2011 Jan-03	2013 Jan-04	2013 Jan-03
Congressional Year	1	2	1	2	1	2	1	2	1	2	1	2	1	2	1	2	1	2	1	2
Apportionment	21										22									
Total U. S.																				
Reelected Incumbents	325		349		361		395		394		381		395							
Size of House (adjusted)	435		435		435		435		435		435		435							
Size of House	435		435		435		435		435		435		435							
RIP %	74.7%		80.2%		83.0%		90.8%		90.6%		87.6%		90.8%							
State:	Admission																			
Alabama	Dec. 14, 1819	57.1%	100.0%	100.0%	71.4%	100.0%	100.0%	100.0%	100.0%	100.0%	57.1%	100.0%	100.0%	100.0%	100.0%	100.0%	100.0%	100.0%	100.0%	100.0%
Alaska	Jan. 3, 1959	100.0%	100.0%	100.0%	100.0%	100.0%	100.0%	100.0%	100.0%	100.0%	100.0%	100.0%	100.0%	100.0%	100.0%	100.0%	100.0%	100.0%	100.0%	100.0%
Arizona	Feb. 14, 1912	66.7%	50.0%	100.0%	100.0%	100.0%	100.0%	83.3%	62.5%	100.0%	100.0%	100.0%	100.0%	100.0%	100.0%	100.0%	100.0%	100.0%	100.0%	100.0%
Arkansas	June 15, 1836	25.0%	100.0%	25.0%	100.0%	100.0%	75.0%	100.0%	100.0%	100.0%	100.0%	100.0%	100.0%	100.0%	100.0%	100.0%	100.0%	100.0%	100.0%	100.0%
California	Sept. 9, 1850	67.3%	88.5%	90.4%	90.4%	90.4%	90.4%	88.5%	94.3%	96.2%	96.2%	96.2%	96.2%	96.2%	96.2%	96.2%	96.2%	96.2%	96.2%	96.2%
Colorado	Aug. 1, 1876	83.3%	100.0%	66.7%	66.7%	100.0%	100.0%	71.4%	85.7%	85.7%	85.7%	85.7%	85.7%	85.7%	85.7%	85.7%	85.7%	85.7%	85.7%	85.7%
Connecticut	Jan. 9, 1788	100.0%	100.0%	83.3%	83.3%	83.3%	83.3%	83.3%	100.0%	100.0%	100.0%	100.0%	100.0%	100.0%	100.0%	100.0%	100.0%	100.0%	100.0%	100.0%
Delaware	Dec. 7, 1787	0.0%	100.0%	100.0%	100.0%	100.0%	100.0%	100.0%	100.0%	100.0%	100.0%	100.0%	100.0%	100.0%	100.0%	100.0%	100.0%	100.0%	100.0%	100.0%
Florida	Mar. 3, 1845	56.5%	87.0%	87.0%	100.0%	100.0%	87.0%	80.0%	92.0%	92.0%	92.0%	92.0%	92.0%	92.0%	92.0%	92.0%	92.0%	92.0%	92.0%	92.0%
Georgia	Jan. 2, 1788	36.4%	72.7%	100.0%	100.0%	100.0%	100.0%	61.5%	69.2%	69.2%	69.2%	69.2%	69.2%	69.2%	69.2%	69.2%	69.2%	69.2%	69.2%	69.2%
Hawaii	Aug. 21, 1959	100.0%	100.0%	100.0%	100.0%	100.0%	100.0%	100.0%	100.0%	100.0%	100.0%	100.0%	100.0%	100.0%	100.0%	100.0%	100.0%	100.0%	100.0%	100.0%
Idaho	July 3, 1890	50.0%	50.0%	100.0%	100.0%	100.0%	50.0%	50.0%	100.0%	100.0%	100.0%	100.0%	100.0%	100.0%	100.0%	100.0%	100.0%	100.0%	100.0%	100.0%
Illinois	Dec. 3, 1818	80.0%	85.0%	85.0%	85.0%	85.0%	90.0%	94.7%	89.5%	89.5%	89.5%	89.5%	89.5%	89.5%	89.5%	89.5%	89.5%	89.5%	89.5%	89.5%
Indiana	Dec. 11, 1816	90.0%	70.0%	80.0%	80.0%	90.0%	80.0%	88.9%	88.9%	88.9%	88.9%	88.9%	88.9%	88.9%	88.9%	88.9%	88.9%	88.9%	88.9%	88.9%
Iowa	Dec. 28, 1846	100.0%	60.0%	80.0%	80.0%	100.0%	100.0%	80.0%	100.0%	100.0%	100.0%	100.0%	100.0%	100.0%	100.0%	100.0%	100.0%	100.0%	100.0%	100.0%
Kansas	Jan. 29, 1861	100.0%	50.0%	25.0%	75.0%	100.0%	100.0%	100.0%	100.0%	100.0%	100.0%	100.0%	100.0%	100.0%	100.0%	100.0%	100.0%	100.0%	100.0%	100.0%
Kentucky	June 1, 1792	66.7%	66.7%	83.3%	66.7%	100.0%	100.0%	100.0%	83.3%	83.3%	83.3%	83.3%	83.3%	83.3%	83.3%	83.3%	83.3%	83.3%	83.3%	83.3%
Louisiana	Apr. 30, 1812	85.7%	100.0%	71.4%	100.0%	100.0%	100.0%	85.7%	57.1%	57.1%	57.1%	57.1%	57.1%	57.1%	57.1%	57.1%	57.1%	57.1%	57.1%	57.1%
Maine	Mar. 15, 1820	100.0%	0.0%	50.0%	100.0%	100.0%	100.0%	50.0%	100.0%	100.0%	100.0%	100.0%	100.0%	100.0%	100.0%	100.0%	100.0%	100.0%	100.0%	100.0%
Maryland	Apr. 28, 1788	75.0%	87.5%	100.0%	100.0%	100.0%	100.0%	75.0%	100.0%	100.0%	100.0%	100.0%	100.0%	100.0%	100.0%	100.0%	100.0%	100.0%	100.0%	100.0%
Massachusetts	Feb. 6, 1788	70.0%	100.0%	70.0%	90.0%	100.0%	100.0%	100.0%	100.0%	100.0%	100.0%	100.0%	100.0%	100.0%	100.0%	100.0%	100.0%	100.0%	100.0%	100.0%
Michigan	Jan. 26, 1837	68.8%	87.5%	87.5%	100.0%	93.8%	86.7%	93.3%	93.3%	93.3%	93.3%	93.3%	93.3%	93.3%	93.3%	93.3%	93.3%	93.3%	93.3%	93.3%
Minnesota	May 11, 1858	75.0%	75.0%	100.0%	100.0%	75.0%	87.5%	100.0%	100.0%	100.0%	100.0%	100.0%	100.0%	100.0%	100.0%	100.0%	100.0%	100.0%	100.0%	100.0%
Mississippi	Dec. 10, 1817	100.0%	80.0%	80.0%	80.0%	100.0%	100.0%	100.0%	100.0%	100.0%	100.0%	100.0%	100.0%	100.0%	100.0%	100.0%	100.0%	100.0%	100.0%	100.0%
Missouri	Aug. 10, 1821	77.8%	88.9%	66.7%	100.0%	66.7%	100.0%	77.8%	77.8%	77.8%	77.8%	77.8%	77.8%	77.8%	77.8%	77.8%	77.8%	77.8%	77.8%	77.8%
Montana	Nov. 8, 1889	100.0%	100.0%	0.0%	100.0%	0.0%	100.0%	100.0%	100.0%	100.0%	100.0%	100.0%	100.0%	100.0%	100.0%	100.0%	100.0%	100.0%	100.0%	100.0%
Nebraska	Mar. 1, 1867	100.0%	66.7%	100.0%	66.7%	66.7%	66.7%	66.7%	100.0%	100.0%	100.0%	100.0%	100.0%	100.0%	100.0%	100.0%	100.0%	100.0%	100.0%	100.0%
Nevada	Oct. 31, 1864	100.0%	50.0%	50.0%	50.0%	100.0%	100.0%	66.7%	100.0%	100.0%	100.0%	100.0%	100.0%	100.0%	100.0%	100.0%	100.0%	100.0%	100.0%	100.0%
New Hampshire	June 21, 1788	100.0%	50.0%	50.0%	100.0%	100.0%	100.0%	50.0%	100.0%	100.0%	100.0%	100.0%	100.0%	100.0%	100.0%	100.0%	100.0%	100.0%	100.0%	100.0%
New Jersey	Dec. 18, 1787	76.9%	76.9%	76.9%	92.3%	92.3%	92.3%	92.3%	100.0%	100.0%	100.0%	100.0%	100.0%	100.0%	100.0%	100.0%	100.0%	100.0%	100.0%	100.0%
New Mexico	Jan. 6, 1912	100.0%	100.0%	100.0%	66.7%	100.0%	100.0%	66.7%	100.0%	100.0%	100.0%	100.0%	100.0%	100.0%	100.0%	100.0%	100.0%	100.0%	100.0%	100.0%
New York	July 26, 1788	71.0%	90.3%	96.8%	87.1%	93.5%	96.6%	93.1%	93.1%	93.1%	93.1%	93.1%	93.1%	93.1%	93.1%	93.1%	93.1%	93.1%	93.1%	93.1%
North Carolina	Nov. 21, 1789	83.3%	58.3%	75.0%	100.0%	91.7%	100.0%	84.6%	84.6%	84.6%	84.6%	84.6%	84.6%	84.6%	84.6%	84.6%	84.6%	84.6%	84.6%	84.6%
North Dakota	Nov. 2, 1889	0.0%	100.0%	100.0%	100.0%	100.0%	100.0%	100.0%	100.0%	100.0%	100.0%	100.0%	100.0%	100.0%	100.0%	100.0%	100.0%	100.0%	100.0%	100.0%
Ohio	Mar. 1, 1803	68.4%	78.9%	89.5%	94.7%	94.7%	88.9%	100.0%	100.0%	100.0%	100.0%	100.0%	100.0%	100.0%	100.0%	100.0%	100.0%	100.0%	100.0%	100.0%
Oklahoma	Nov. 16, 1907	83.3%	50.0%	83.3%	100.0%	83.3%	80.0%	80.0%	80.0%	80.0%	80.0%	80.0%	80.0%	80.0%	80.0%	80.0%	80.0%	80.0%	80.0%	80.0%
Oregon	Feb. 14, 1859	80.0%	60.0%	60.0%	60.0%	100.0%	100.0%	100.0%	100.0%	100.0%	100.0%	100.0%	100.0%	100.0%	100.0%	100.0%	100.0%	100.0%	100.0%	100.0%
Pennsylvania	Dec. 12, 1787	76.2%	76.2%	90.5%	85.7%	90.5%	84.2%	84.2%	84.2%	84.2%	84.2%	84.2%	84.2%	84.2%	84.2%	84.2%	84.2%	84.2%	84.2%	84.2%
Rhode Island	May 29, 1790	100.0%	50.0%	50.0%	100.0%	50.0%	100.0%	100.0%	100.0%	100.0%	100.0%	100.0%	100.0%	100.0%	100.0%	100.0%	100.0%	100.0%	100.0%	100.0%
South Carolina	May 23, 1788	66.7%	66.7%	100.0%	83.3%	83.3%	83.3%	83.3%	83.3%	83.3%	83.3%	83.3%	83.3%	83.3%	83.3%	83.3%	83.3%	83.3%	83.3%	83.3%
South Dakota	Nov. 2, 1889	100.0%	100.0%	0.0%	100.0%	0.0%	100.0%	0.0%	100.0%	100.0%	100.0%	100.0%	100.0%	100.0%	100.0%	100.0%	100.0%	100.0%	100.0%	100.0%
Tennessee	June 1, 1796	100.0%	66.7%	77.8%	100.0%	100.0%	66.7%	66.7%	100.0%	100.0%	100.0%	100.0%	100.0%	100.0%	100.0%	100.0%	100.0%	100.0%	100.0%	100.0%
Texas	Dec. 29, 1845	86.7%	83.3%	70.0%	96.7%	96.7%	87.5%	78.1%	78.1%	78.1%	78.1%	78.1%	78.1%	78.1%	78.1%	78.1%	78.1%	78.1%	78.1%	78.1%
Utah	Jan. 4, 1896	66.7%	66.7%	33.3%	100.0%	66.7%	66.7%	66.7%	100.0%	100.0%	100.0%	100.0%	100.0%	100.0%	100.0%	100.0%	100.0%	100.0%	100.0%	100.0%
Vermont	Mar. 4, 1791	100.0%	100.0%	100.0%	100.0%	100.0%	100.0%	100.0%	100.0%	100.0%	100.0%	100.0%	100.0%	100.0%	100.0%	100.0%	100.0%	100.0%	100.0%	100.0%
Virginia	June 25, 1788	72.7%	90.9%	90.9%	100.0%	72.7%	90.9%	90.9%	90.9%	90.9%	90.9%	90.9%	90.9%	90.9%	90.9%	90.9%	90.9%	90.9%	90.9%	90.9%
Washington	Nov. 11, 1889	55.6%	33.3%	88.9%	77.8%	88.9%	77.8%	77.8%	77.8%	77.8%	77.8%	77.8%	77.8%	77.8%	77.8%	77.8%	77.8%	77.8%	77.8%	77.8%
West Virginia	June 20, 1863	100.0%	100.0%	100.0%	100.0%	66.7%	100.0%	100.0%												